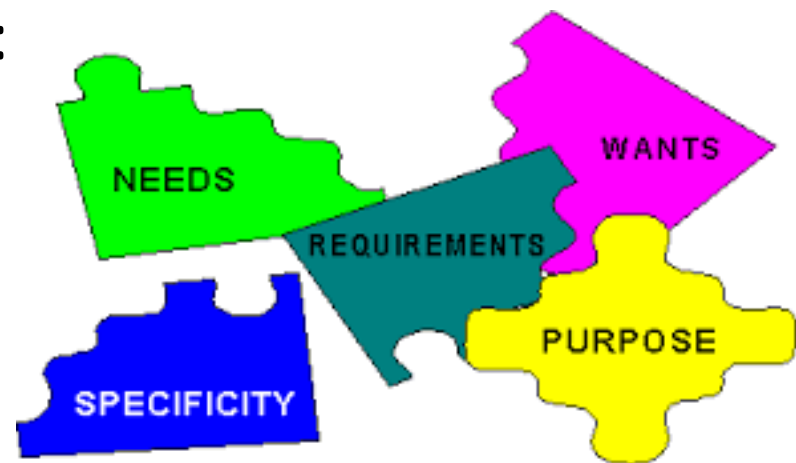


Criteria

- Institution should **provide students for progress in academic career:**
 - **Conditions**
 - **Support**
- Institutions should ensure:
 - **fit-for-purpose procedures:**
 - admission
 - recognition
 - Completion



Criteria

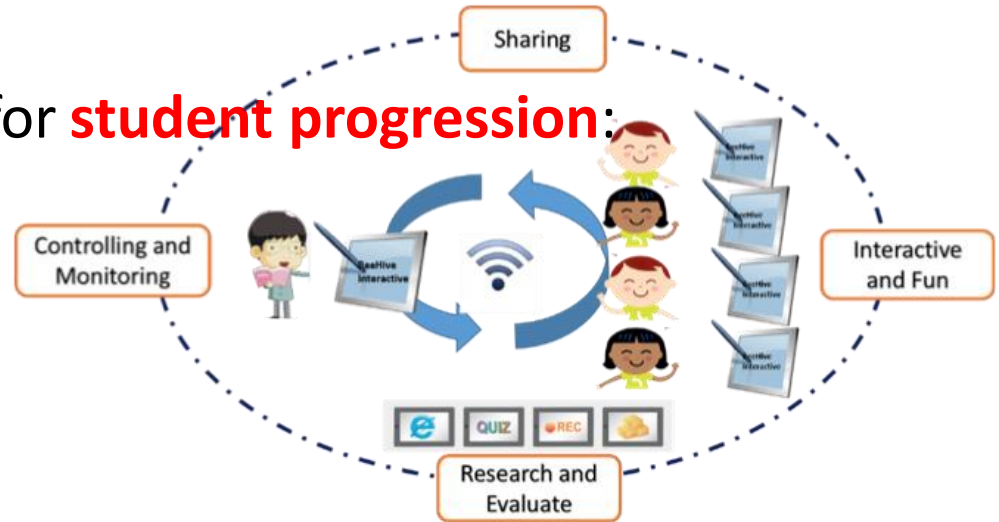
- **Induction to the institution** and the programme should be provided
- **Student access:**
 - policies
 - admission processes
 - criteria
 - ✓ implemented consistently
 - ✓ in a transparent manner



**STUDENT
INFORMATION
SYSTEM**

Criteria

- Institutions have in place for **student progression**:
 - **processes**
 - **tools** to:
 - ✓ collect
 - ✓ monitor
 - ✓ act
- **Appropriate and fair recognition regulation** and **procedures** in line with the principles of the Lisbon Recognition Convention
 - ❖ **ensuring coherent recognition**
- **Students** should **receive documentation**
 - **explaining the qualification** gained
 - including:
 - achieved learning outcomes
 - context



Standard 2

Admission

Progression requirements

Student evaluation methods

All

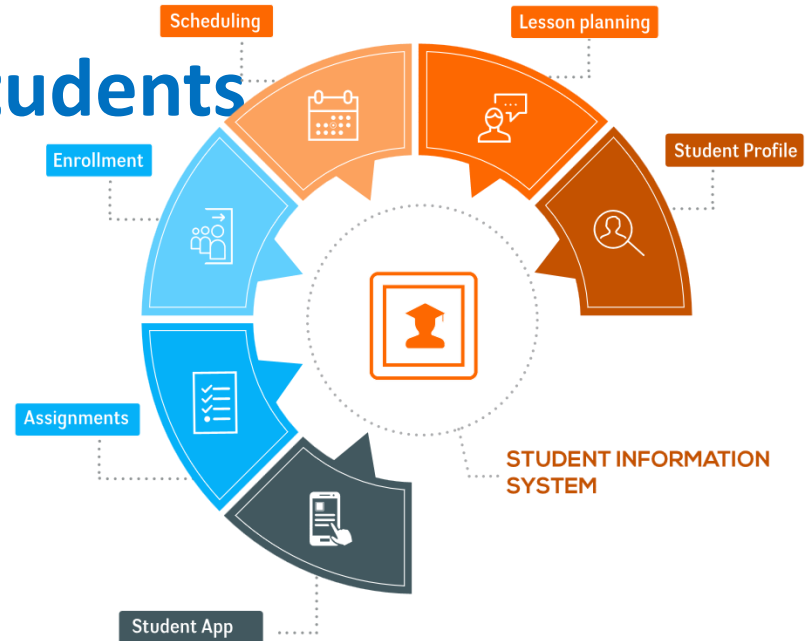
➤ are clear

➤ made available



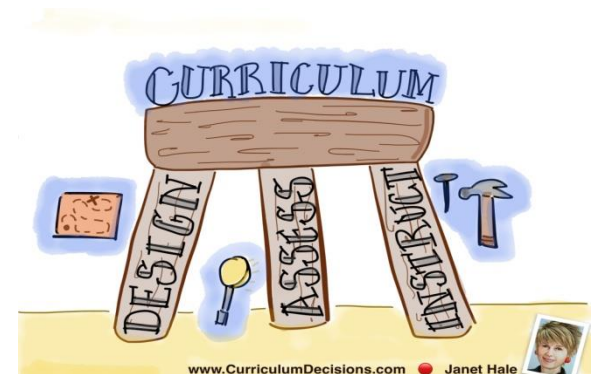
Criteria

- The institution **informs students**
 - for study programmes
 - training programs
 - access conditions
 - evaluation methods
- The institution **publishes**
 - objectives of each course
 - admission procedures
 - rules covering all phases of the study cycle



Criteria

- **Admission** requirements and student selection procedures **correspond** to the **standards** of the study program
- **Curriculum ties** in with the **qualifications** of the **incoming students**



Criteria

- **Information** specifically for **students with disabilities**
- **Welcomes** and pursues **specific policies** for **absorption** and **integration of new students**
- **Establishes separate structures** for new students
 - ❖ reception
 - ❖ information
 - ❖ admission



Standard 3

- **Mechanisms for student support and advice** are established for:
 - successful **accomplishment**
 - **continuation of studies**
 - **career preparation and success**
 - **job placement-orientation**



Criteria

- **The institution fosters:**
 - the students' contribution to **quality improvement**
 - communication with alumni and the **creation of an alumni community**
 - information and **orientation of students**
 - **framework for guiding** and advising
 - **mechanisms** relating to **student support** and advice
 - **structure of information** and counselling

Criteria



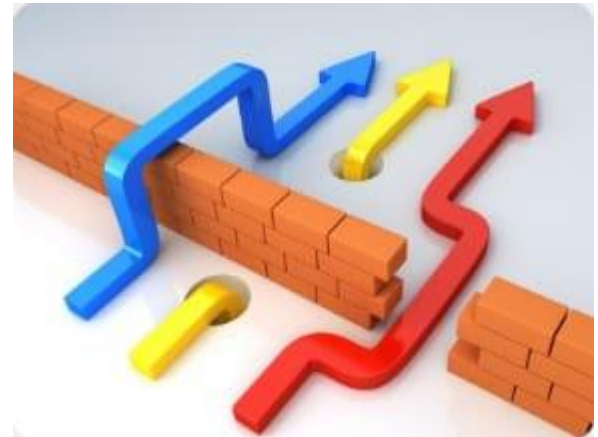
MENTORS HELPING YOU EVERY STEP OF THE WAY

The institution:

- Owns **external communication** means
- Owns **internal communication** means
- staff have internal **email addresses**
- Holds **personal files** for each student
 - address (including email address) and phone number
- The institution follows supporting policies for students' progress
 - *provides tutorship for students*
 - *tie in with the needs of students*

Criteria

- The institution:
 - **applies alternative teaching methods** depending on its students' interests
 - **assists and guides students** how to **find literature**
 - offers **courses** to **help students in difficulty**
 - provides **orientation activities**



Standard 4

- Institutions ensure implementation of:
 - a **student-centred learning** and teaching
 - encouraging **students to play an active** role in creating the learning process
 - **reflected** in the student **assessment**



Criteria

- **Student-centred learning and teaching** plays an important role in:
 - stimulating students' motivation
 - self-reflection
 - engagement in the learning process
- This means:
 - **careful consideration for study programmes** of the:
 - design
 - delivery
 - the assessment of outcomes



Criteria

- The **student-centred learning** and teaching:
 - respects diversity of students
 - their needs
 - enabling flexible learning paths
 - considers and uses different modes of delivery
 - use variety of pedagogical methods



Criteria



INSTITUTION:

- **Regularly evaluates** and adjusts the modes of delivery and pedagogical
- **Promotes mutual respect** with in the learner-teacher relationship
- **Has appropriate procedures** for dealing with students' complaints

The Internal quality assurance processes for students assessment

- Assessors are familiar with existing testing and examination methods
- The criteria and method of assessment are published in advance
- The assessment allows students to demonstrate the extent to which the intended learning outcomes have been achieved.
- Students are given feedback
- assessment is carried out by more than one examiner
- Assessment is consistent, fairly applied to all students
- formal procedure for students' appeals is in place and implemented



Standard 5

- The institution **ensures inclusiveness** of any kind of student admitted



Criteria

- **Learning and teaching** take into account:
 - **diversity** of students
 - **their needs**
 - **flexible learning paths**
 - **inclusive education context**
 - **students** who are **not adequately prepared** for study at the level
- **INSTITUTION** supports:
 - **the use of teaching methods** to ensure quality training regardless of student profile
 - **research** and the implementation of **new learning methods**
 - to foster interdisciplinary
 - to develop transversal skills



Criteria

- The institution has **transparently** implemented
 - gender **equality**
 - equal **opportunity** and support policy for students with:
 - particular living circumstances
 - disabilities
 - chronic illnesses
 - vulnerable groups
 - **policy of support**
 - students engaging in sports activities
 - students wishing to pursue part-time studies
 - Roma students and Balkan Egyptians



Standard 6

- **The institution has a supportive policy to:**
 - extra-curriculum activities**
 - reward the engagement of students**



Criteria:

- **The institution:**
 - **pursues a policy** to facilitate **student life**
 - **supports** students' **cultural life**
 - is actively and **regularly involved** in regional **socio-cultural initiatives**
 - **supports students** who engage in **sports activities**

